

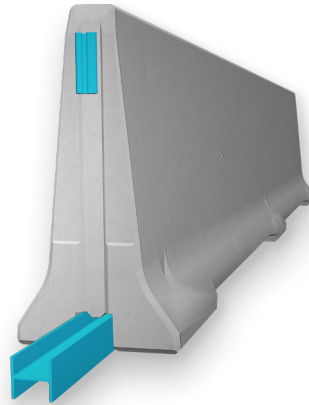
# REBLOC 120FA\_6\_SF

## Technical Datasheet

REBLOC 120FA-6-SF

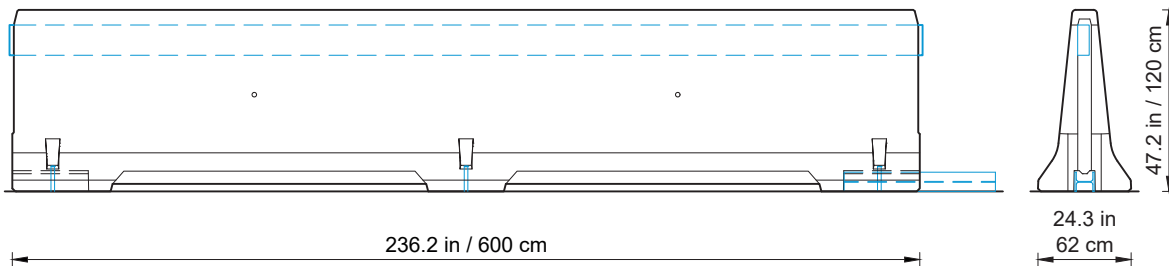
Precast Concrete  
Vehicle Restraint System

Permanent System  
Free standing



### Technical data

Test level	TL5
Working width	90.2 in (2.3 m)
Dynamic deflection	62.2 in (1.6 m)
Installation	free standing on asphalt   concrete
Application	single-sided   double-sided
Minimum installation length	335 ft (102 m; 17 elements)
Initial/end anchorage	required (6 screwbolts Ø 20/300 mm) or force closure
Dimensions L x W x H in cm	236.2 x 24.3 x 47.2 in (600 x 62 x 120 cm)
Weight/element	approx. 10538 lb (4780 kg)
Curve radius	$r \geq 476$ ft (150 m)
Coupling/exposed steel parts	fully integrated, exposed parts hot-dip galvanized



all dimensions in cm